



STALL SHOWER & EYEWASH STATION
SKID MOUNTED WITH AUDIO ALARM AND LIGHT
MODEL 50008056



PRODUCT DESCRIPTION

Skid mounted emergency stall shower and eyewash station with multi nozzles for full body spray coverage and eyewash designed for installation in areas where people may come into contact with hazardous materials.

ASSEMBLY AND INSTALLATION INSTRUCTIONS

1. Skid mounted stall shower stations are pre-assembled at factory ready for customer installation.
2. Position stall in desired location ensuring the 1.25" / 3.2 cm NPT water inlet is in line with the water supply pipe and shower skid is level.
3. Connect water supply to the 1.25" / 3.2 cm NPT water inlet of the stall unit using pipe wrench and pipe sealant. **CAUTION: DO NOT OVER TIGHTEN.**
4. Locate drain (side or bottom). Measure drain size (approx. 3" / 7.6 cm or 4" / 10.2 cm). Connect drain to drain pipe using pipe wrench and pipe sealant. **CAUTION: DO NOT OVER TIGHTEN.**
5. Attach eyewash head assembly to fountain section, taking care to avoid cross threading. Hand tighten until snug and eyewash heads are positioned perpendicular to shower activation handle. **CAUTION: DO NOT OVER TIGHTEN. DO NOT USE PIPE SEALANT.**
6. Secure stall shower to floor using appropriate hardware, if desired. (Mounting hardware are not included.)
7. Check for leaks and proper water flow pattern upon testing of shower. (Maximum dynamic water pressure 80 psi / 551.6 kPa. Minimum dynamic water pressure 30 psi / 206.8 kPa.)
8. Refer to junction box and schematic drawing for location of power and remote contacts for alarm/flow switch



OPERATION AND MAINTENANCE

1. Plumbed units shall be activated weekly to flush lines and verify proper flow pattern and volume.
2. Test records should be maintained verifying compliance with testing procedures.
3. Some chemical vapors or liquids may damage or soften plastic materials. Precaution should be taken to determine compatibility prior to installation.

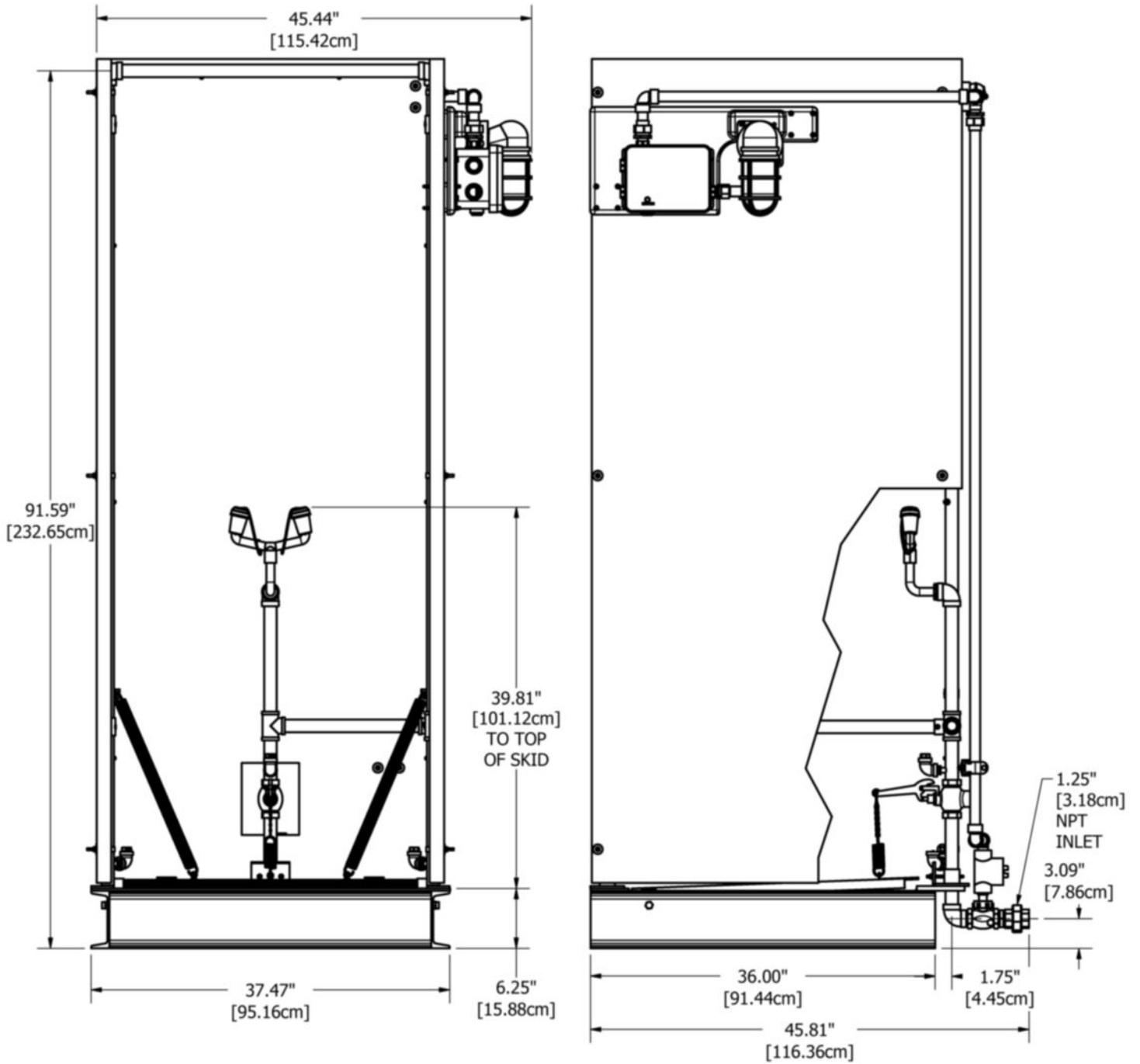
TRAINING

All employees who might be exposed to chemical splash shall be instructed in the location and proper use of emergency shower and eye/facewash units. Medical and industrial experiences have shown that initial first-aid treatment for chemical should be to wash the eyes and face for 15 minutes prior to medical treatment. It is important to hold the eyelids open and roll the eyes so water will flow on all surfaces and in the folds surrounding the eye.

SPARE PARTS LIST

P/N	DESCRIPTION
00011701	Brass Spray Nozzle
01052123	ABS Eyewash Head Assembly w/ABS Wye
00014685	Flow Switch, 2 GPM
00011016	Brass Self-Closing Ball Valve, 1" / 2.5 cm
50003256SP1	Amber Light Globe
00013393	Relay, 3 Amp/120V
00013575	Flasher
00014482	Audio Alarm, 120V, 104db @ 2' / 0.6 m
00013620	Light Fixture

OVERALL DIMENSIONS



PROPOSITION 65

WARNING: This product can expose you to BPA, which is known to the State of California to cause birth defects or other reproductive harm. For more information go to www.P65Warnings.ca.gov.

WARRANTY STATEMENT

ENCON HEREBY DISCLAIMS ALL WARRANTIES EXPRESSED OR IMPLIED INCLUDING BUT NOT LIMITED TO WARRANTIES OF MERCHANTABILITY, FITNESS FOR A PARTICULAR PURPOSE, AND NON-INFRINGEMENT OF THIRD-PARTY RIGHTS, EXCEPT AS HEREINAFTER PROVIDED.

Encon Safety Products warrants that for one year from the date of purchase of any Encon products, the product will be free of defects in materials and workmanship if properly used and cared for or cleaned under normal conditions in accordance with Encon's use and care instructions and properly installed, if applicable, in accordance with Encon's installation instructions. With respect to the product, Encon's only obligation and purchaser's exclusive remedy under this warranty is to repair or replace such product; provided that:

1. Encon is notified of the defect within one year of shipment, and
2. the product is determined by Encon to be defective.

Encon requires proof of original ownership as proof of warranty coverage, and Encon must receive any claim under this Limited Warranty within one year of purchase of the product.

NOTWITHSTANDING ANYTHING TO THE CONTRARY CONTAINED HEREIN, ENCON SHALL NOT BE LIABLE FOR LOSS, DAMAGE, OR EXPENSE ARISING DIRECTLY OR INDIRECTLY AS A CONSEQUENCE OF USE OF THE EQUIPMENT WITH OTHER PRODUCTS OR FROM ANY OTHER CAUSE, INCLUDING ANY CONSEQUENTIAL, INCIDENTAL, SPECIAL OR EXEMPLARY DAMAGES, EXCEPT FOR ENCON'S OBLIGATION TO REPAIR OR REPLACE DEFECTIVE PRODUCTS AS EXPRESSLY PROVIDED IN THIS STATEMENT.

Replacement parts purchased from Encon are warranted for one year following the shipment of such replacement part, or until the expiration of the warranty period for the product, whichever is less. No warranty is given in connection with products that are altered without Encon's expressed written consent. The same warranty limitations and the obligations of Encon as set out herein above shall apply to replacement parts.

Encon's total liability arising out of this warranty (including, but not limited to, warranty claims) regardless of forum and regardless of whether such action or claim is based on tort, contract or otherwise will not exceed the total purchase price of the product.



6825 W. Sam Houston Pkwy. N
Houston, TX 77041
1-800-AT-ENCON / 1-800-283-6266
customerservice@enconsafety.com
<http://www.enconsafety.com>